

The image shows a blurred blue sign on a building facade that reads "SPALECK". In the foreground, there are yellow flowers, likely Black-eyed Susans, which are slightly out of focus.

Employee Participation in Corporate Climate Adaptation Actions

- Project „Faktor Grün“ -

European Green Premises | Conference | Wiesbaden - 15th September 2022

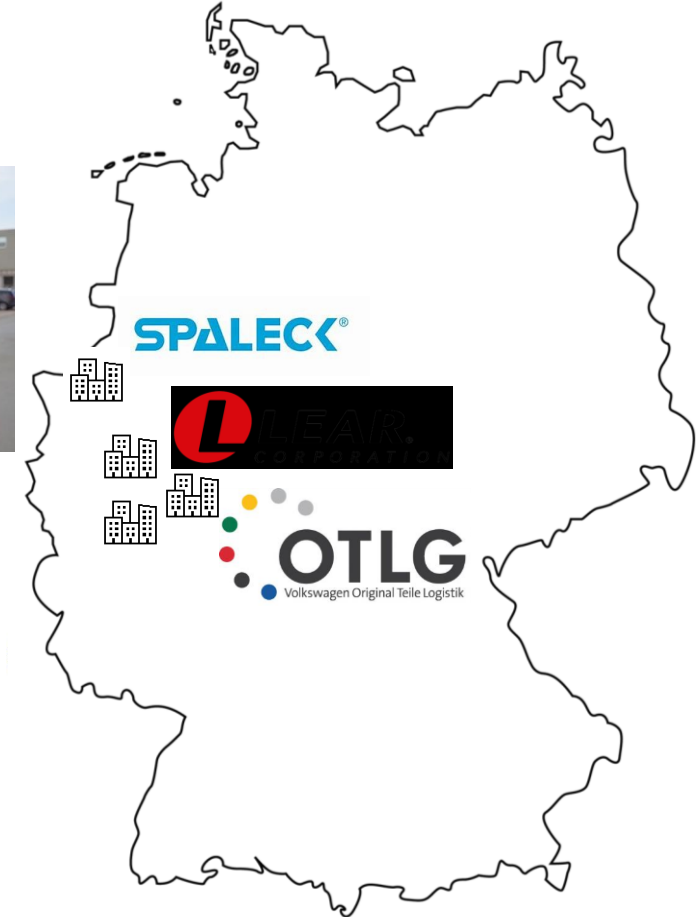
Project „Faktor Grün“

“Making climate-friendly corporate management visible and initiating measures with staff members”



- 4 participating companies
- Sustainable goal setting at eye level with employees
- Best practice examples for other companies

Project duration: 6/2021 – 3/2023

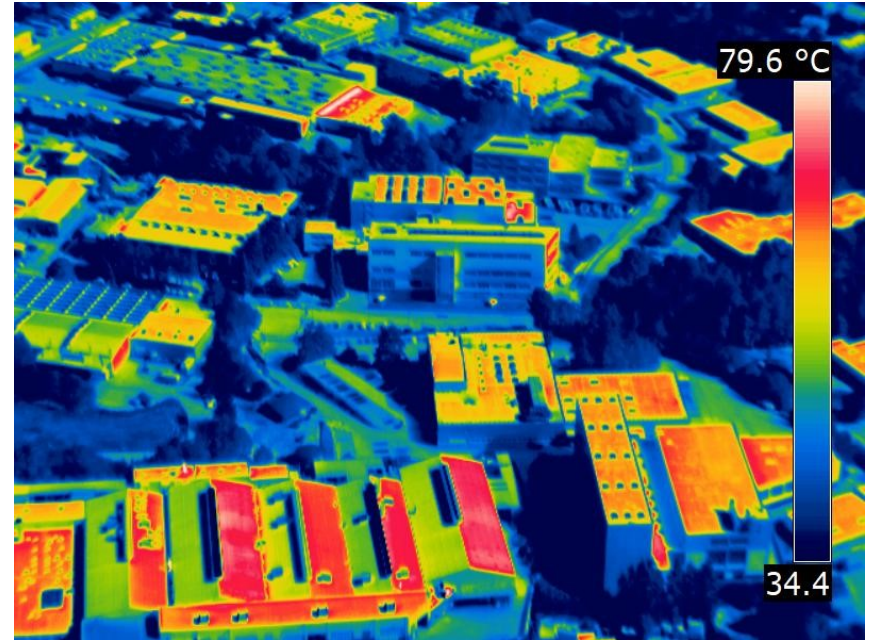


Federal Ministry for the
Environment, Nature Conservation
and Nuclear Safety

Umwelt
Bundesamt 

Challenges for premises and industrial areas

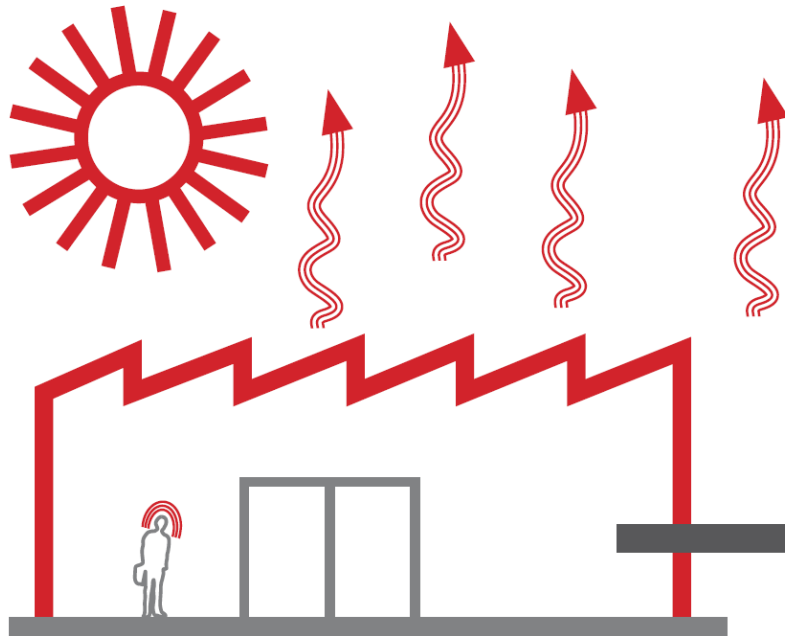
Heat islands and heavy rainfall events



Pictures: IM Müllers

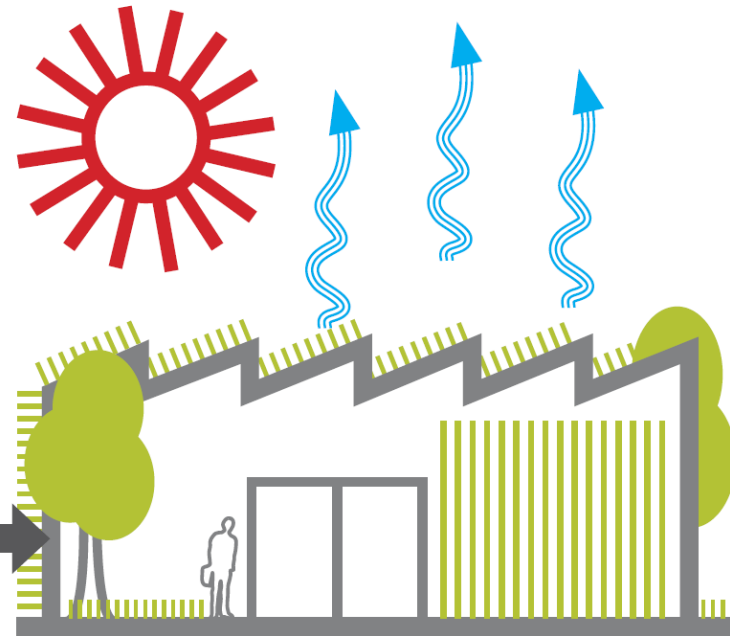
Green or Grey? Impact on employee health

30 °C air temperature



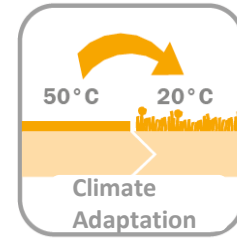
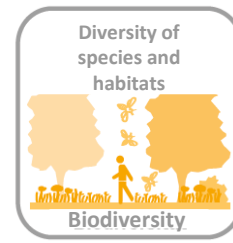
45 °C felt temperature

30 °C air temperature



25 °C felt temperature

Figure: © TU Darmstadt | S. Sieber



Climate adaptation on company premises

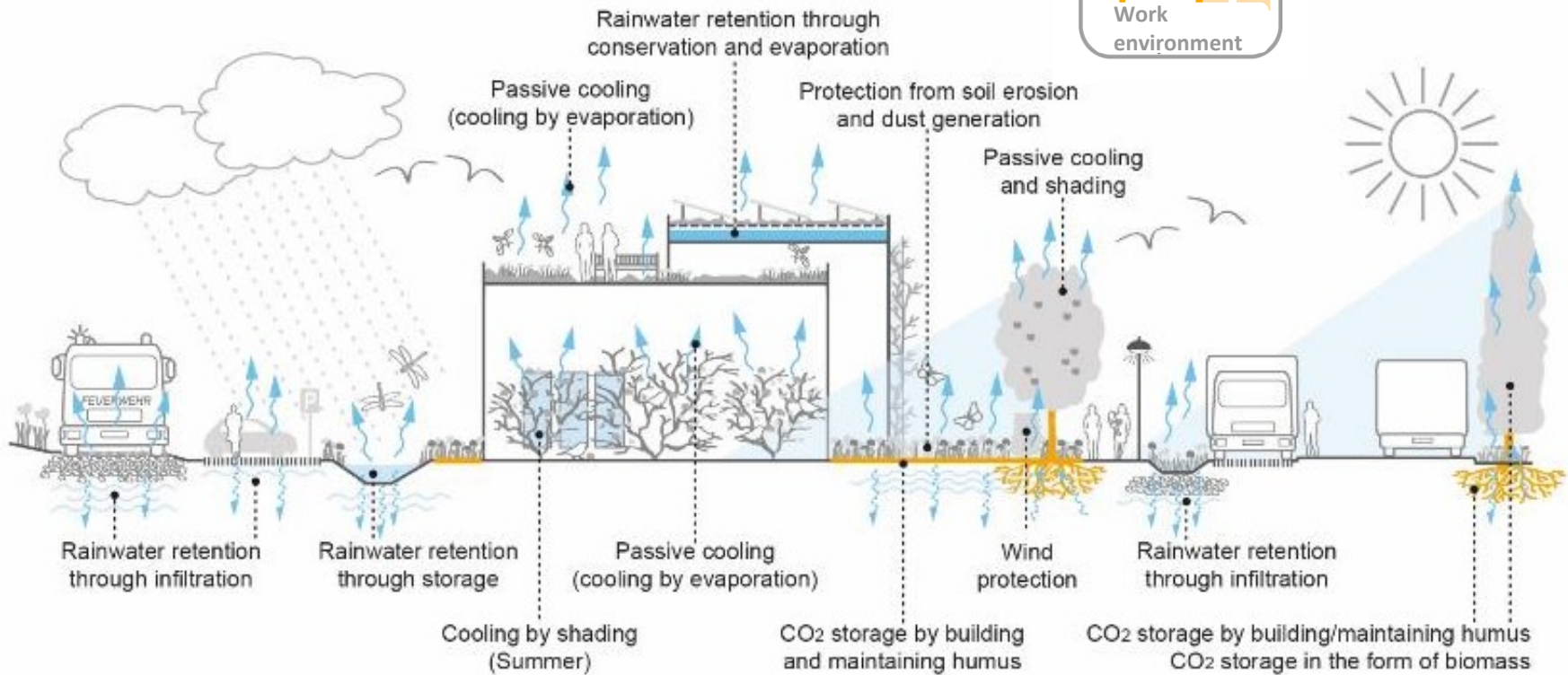
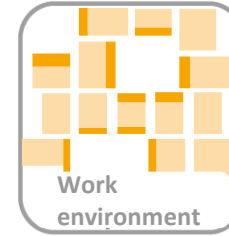


Figure: © TU Darmstadt | S. Sieber

How to get employees involved?

Information and Motivation: Poster exhibitions, Climate quiz, questionnaires and thermographic excursions



How to get employees involved?

Information and Motivation: Information events and expert presentations



© WILA Bonn



© WILA Bonn

How to get employees involved?

Ideas & Planning: Brainstorming and Green Design Workshops



How to get employees involved?

Implementation: Joint Planting Sessions



Employee satisfaction & identification

Green recreation/
meeting areas, Green
facades, multifunctional
areas



Picture: © TU Darmstadt | S. Sieber

© WILA Bonn

Watch this space !

Best Practices and Virtual tour on the company premises



GeWa -Network | stakeholders of municipalities & institutions



Thank you for your attention!

Questions??

Contact |

Meike Rohkemper

Tel. 0228 20161-18

meike.rohkemper@wilabonn.de

Hildegard Boisserée

Tel: 022820161-25

hildegard.boisseree@wilabonn.de

<https://faktor-gruen.de/> | www.gewerbegebiete-im-wandel.de