

BooGI BOP Austrian National Focal Point



European Green Premises 2022

*The economic, social and ecological benefits
of biodiversity to business*

14-15 September

Wiesbaden, Germany


Stefanie Kotrba | 14.09.2022

GRÜNSTATTTGRAU Forschungs- und Innovations- GmbH



funded and supported by:



 Bundesministerium
Klimaschutz, Umwelt,
Energie, Mobilität,
Innovation und Technologie

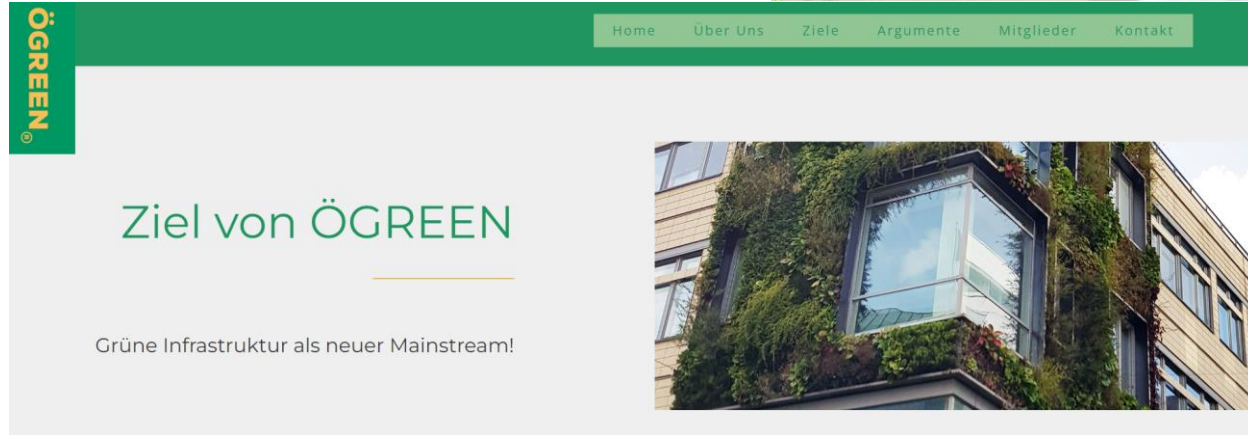


AGENDA

1. How GRÜNSTATTGRAU got on board BooGI BOP: ÖGREEN
2. Introducing GRÜNSTATTGRAU: Mission, Network, Standards, Biodiversity, Dissemination
3. GRÜNSTATTGRAU Greening Check
4. About Greening Buildings & Biodiversity: research & guidelines, conferences
5. Austrian Partners in BooGI BOP
6. Next steps



ÖGREEN the Austrian Green Infrastructure Network



Unternehmensvorstellung


GRÜNSTATTGRAU Forschungs- und Innovations- GmbH

UNTERNEHMENSFORM

Nicht wirtschaftlich, unabhängig

INNOVATIONSLABOR



 Bundesministerium
Klimaschutz, Umwelt,
Energie, Mobilität,
Innovation und Technologie

2017 gegründet; Open Innovation Strategie

Bauwerksbegrünung, NBS, Grüne/Blaue Infrastrukturen, Regenwassermanagement, Klimawandelanpassung, Gebäudeoptimierung;

KLIMANEUTRALE STÄDTE UND GEMEINDEN

MITARBEITERZAHL

14 Angestellte - interdisziplinäres Team



EIGENTÜMER

Verband für Bauwerksbegrünung (VfB)



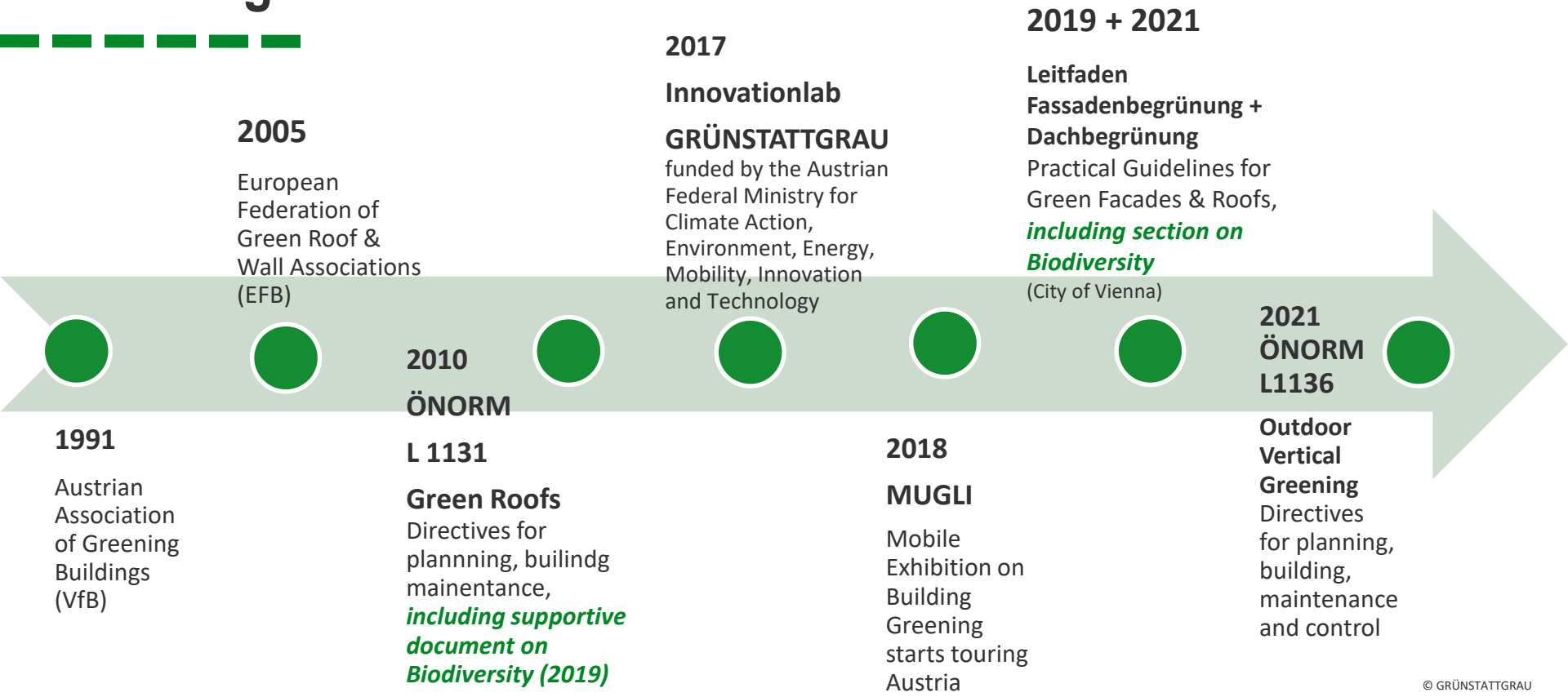
STANDORTE

Büro in Wien, Ziel und- Synergiegebiete in Österreich, International EFB European Federation

PARTNER

380 aus Wissenschaft, Wirtschaft, öffentlicher Hand, Bevölkerung

Development of Austrian Standards in the Building Greening Business



GREEN ROOFS for BIODIVERSITY

Intensive



GRÜNSTATTGRAU office roof garden (Wien)



Our process

Gemeinsam, Learning by doing – no „invented syndrom“

TUN! VORZEIGEN

Planen, Potential abwägen, Finanzierungen, Umsetzbarkeit prüfen, Umsetzen, Bauen, Belohnen, Lehrinhalte anpassen, Icons, Exkursionen, Role out operationalisieren, grün/blau Infrastruktur umsetzen, Bevölkerung einbinden

MESSEN

Zählen, Monitoren, Auswirkung, Klimawirksamkeit, Vergleichen, Best practise demonstrieren, Motivation, Wirkungsdarstellung, Rolemodels Kriterien ausarbeiten (CO2 Senke), organisatorischen, zeitlichen und sonstigen Voraussetzungen dokumentieren, Mainstreaming

GESTALTEN

Gemeinsame Ideen schmieden, ExpertInnenPool, Beraten, Hemmnisse abbauen, an Projekte andocken, Wettbewerb



Copyright: Landformdesign

1

PROZESS
AUFSETZEN,
HEMNMISSEN UND
BARRIEREN
ABBAUEN, INS TUN
KOMMEN

3

4

DISSEMINATION

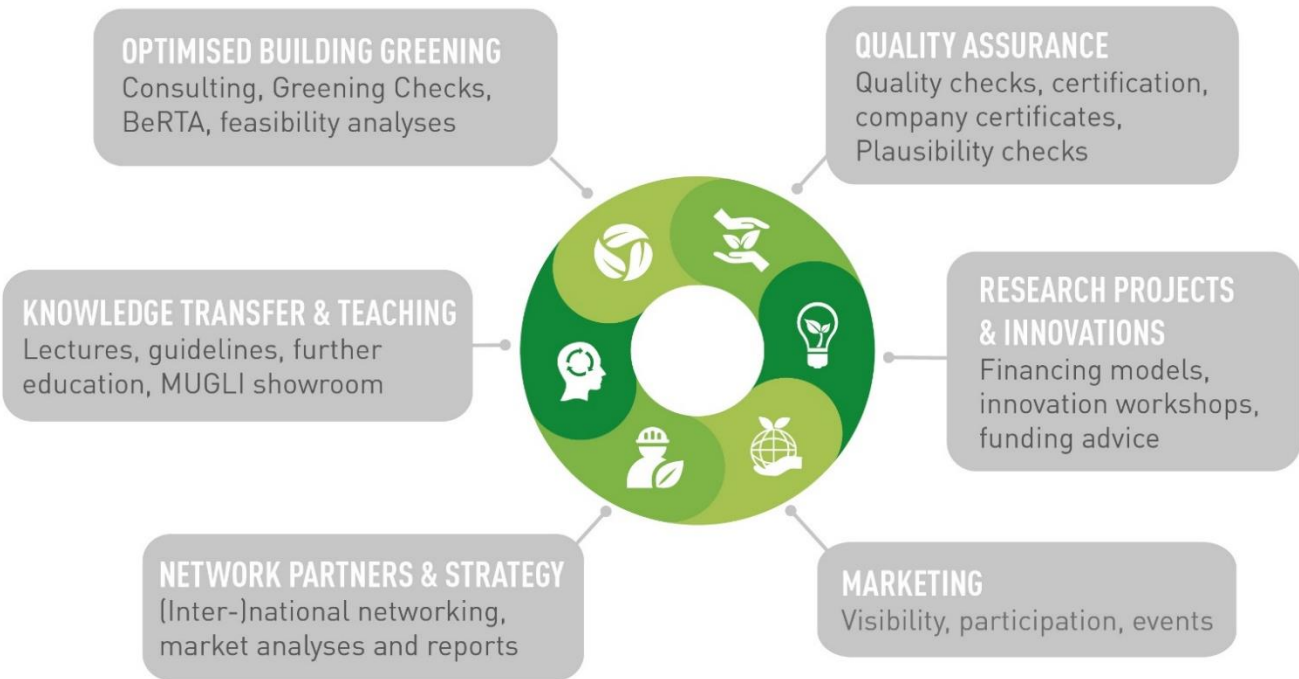
Anlaufstelle erstellen, One Stop Shop, Webseite, Sichtbarkeit für Leuchtturmprojekte, Verwertbarkeit, Innovation, Finanzierungen



Copyright: GRÜNSTATTTGRAU

GRÜNSTATTGRAU

Innovation Lab & Competence Centre





This is
how we
we work

GRÜNSTATTGRAU

DATA BASE



380 partners in our Network



Experts, Partners



SEARCH, FIND, BE FOUND!

Whether expert, successful greening project, research activity or product, in our growing database you can find everything.

This is how it works: by entering the location you can direct the map section. In addition, you have many filter options from the keyword search to different greening methods, offered and searched topics and much more. The data sets are equipped with different symbols and linked together.

Best-Practice



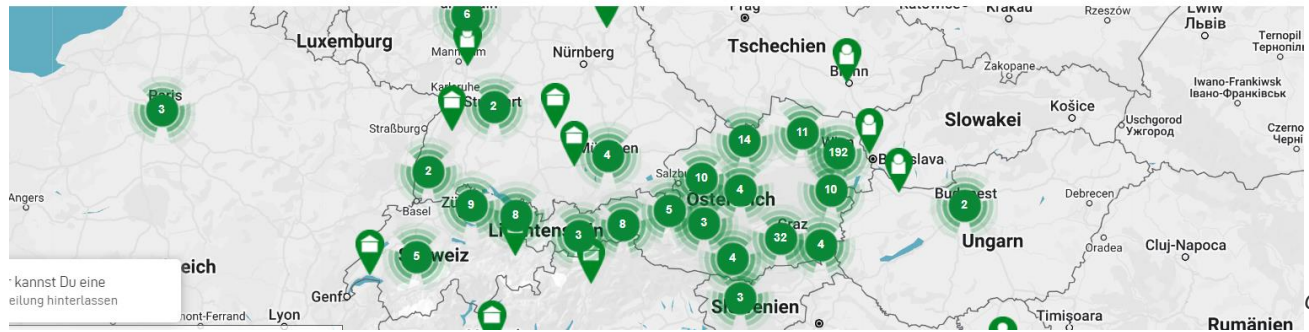
Research projects



Products

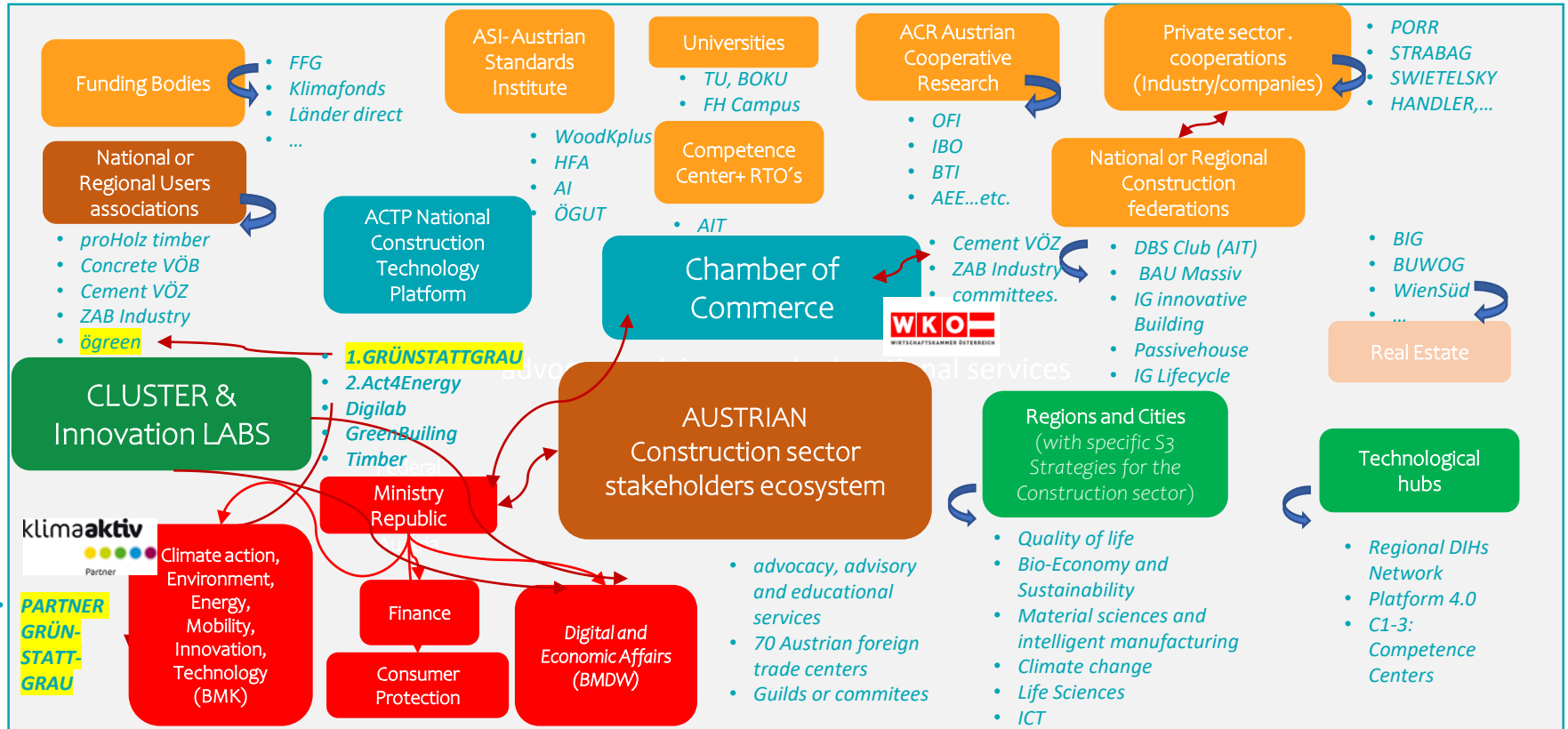


Certification



Ecosystem mapping AT – international -> Metabuilding

Cross-sectoral and cross-border innovation ecosystem for European SMEs



BooGI BOP Partners in Austria and abroad

European Federation of Green Roof and Wall Associations

13 (+4) National Associations
+Extended Networks: WGIN, ELCA, IFLA, SoGreen, etc.

<https://efb-greenbuildings.eu>



REWISA
 GC NiG
 Pulswerk Land
 Vorarlberg,
 BooGI BOP

GALABAU
 Umweltanwaltschaft
 Projekt „Güntenreich“
 REWISA GC
 NiG

NiG GC
 GALABAU
 REWISA

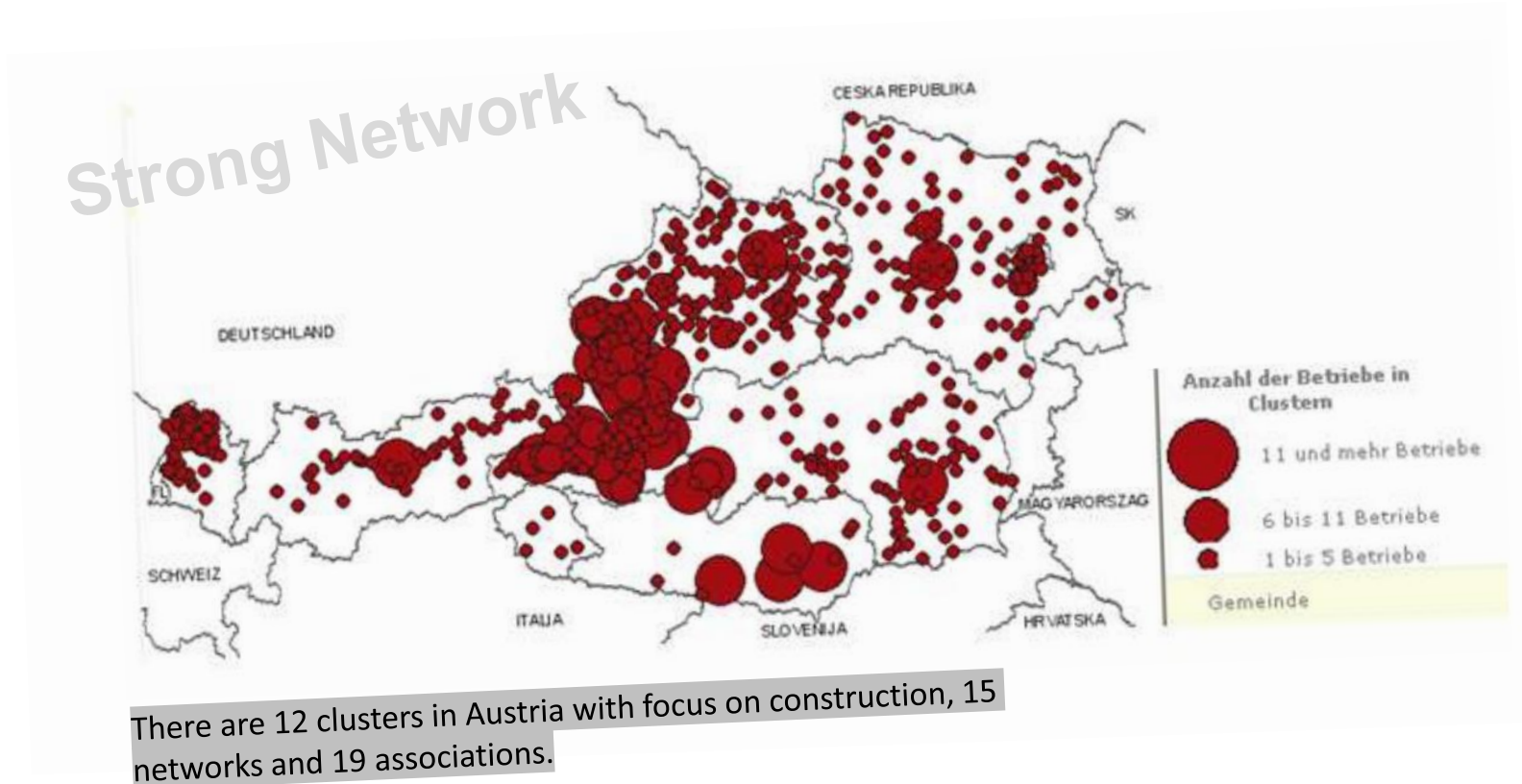
GRÜNSTATTGRAU
Greening Check (GC)
 GC REWISA
 NiG

GALABAU
 REWISA
 NiG GC

University of Vienna, Biodiversity
 Research
 BMK & BMBWF
 Klimataktiv
 RENOVAWE
 FFG
 GC
 WKO
 DUK
 Biodiversity
 Hub
 NiG GC
 GALABAU
 REWISA
 EnU
 GALABAU
 ÖKOBUSINESS
 pulswerk
 ÖGLA
 UNI
 WH-C
 BOKU
 IBLB
 ÖGNI
 AIT
 Umweltbundesamt
 Stadt Wien
 Natur im Garten
 (NiG)
 Enkeltaugliches
 Österreich
 (ETÖ)
 Landschaftspflegeverein
 Thermenlinie
 Städtebund
 Wienerwald
 NiG GC
 Blühendes
 Österreich
 (REWE)
 GALABAU
 Ökosoziales Forum
 Austrian Business Council f
 Sustainable Development Res



Network (cross border), municipalities involved:



GRÜNSTATTGRAU Greening Check - a digital tool for Greening Consultation



YOUR DIGITAL CONSULTATION

We are looking forward to support you with technical know how regarding the feasibility and implementation possibilities of your greening project!

Leistungspaket 1

Beratungsgespräch

Büro | Telefon | Online
inkl. Beratungsprotokoll
Beratungszeit: max. 1h
(inkl. Vor- & Nachbereitung)

PAU €220.- inkl. Ust*

Leistungspaket 2

Persönliche Beratung

Vor-Ort
inkl. Beratungsprotokoll
Beratungszeit: max. 1h
(inkl. Vor- & Nachbereitung)

PAU €360.- inkl. Ust*

zzgl. etwaiger Fahrtkosten nach Aufwand
km-Geld wenn Entfernung über 25 km,
max. €50.-

Leistungspaket 3

Persönliche Beratung

Vor-Ort
inkl. Beratungsprotokoll & Beratungsbericht
Beratungszeit: max. 1h
(inkl. Vor- & Nachbereitung)

PAU €790.- inkl. Ust*

zzgl. etwaiger Fahrtkosten nach Aufwand
km-Geld wenn Entfernung über 25 km,
max. €50.-

Social Media Daten

Daten via Social Wall (ZOHO) _____



FACEBOOK

1/5 Anstieg

Abonnenten: 1807

Gefällt mir: 1.498

Reichweite 33.708

150.000
Impressionen



INSTAGRAM

1/3 Anstieg

4.616 Instagram-User
(6Monate)

1500 Follower

120.000
Impressionen



LINKEDIN

¼ Anstieg

Follower: 3.100

100.000
Impressionen



YOU TUBE

½ Anstieg

Abonnenten: 49 Total

View: 380



TWITTER

¼ Anstieg

806 Follower

208.100
Impressionen



TIKTOK

Ab 2022

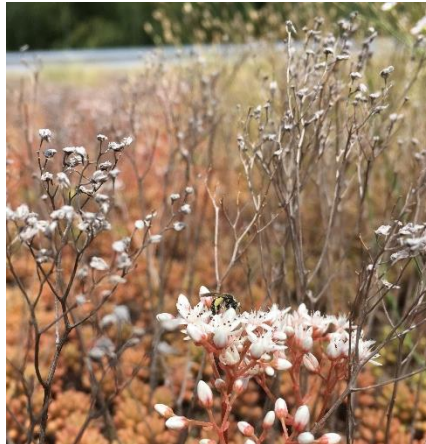
Videobeiträge

Conclusion

- Unique opportunity to **mainstream the perception of Green Infrastructure as a whole**: adding the vertical green and green roofs to the perception, the ecological design and care of green spaces – green spaces must not compete each other but act as stepping stones for habitats.
- Developing **new competences for green space experts**
- Concepts of **ecological greenspace care must be compulsory** and included at the consultation stage of any greening project (including the budget for care)
- New **Austrian Biodiversity Strategy** yet to be published – using the momentum for more biodiversity oriented business premises
- Need for **innovative financial models** for the design and care of such green spaces.

BIODIVERSITY ON GREEN ROOFS & WALLS

Greening buildings promotes
diverse Vegetation
and habitats for Invertebrates
Vertebrates



GREEN ROOF GUIDE LINES

BuGG-Fachinformation „Biodiversitätsgründach“

Grundlagen, Planungshilfen,
Praxisbeispiele

Supportive document (2019)
"Biodiversity" to ÖNORM L1131
(green roof norm)

1. **Substrate modelling:** Thickness between 5 & 25 cm substrate, max. 5% of the roof with 5cm
2. **Substrate variations:** Varying areas with regional sand, gravel, clay,.. for habitat diversity
3. **Structural elements**
4. **Vegetation:** Use local seeds, maintain regional character with care
5. Water management
6. Ecological Care



© GSG, Gruchmann



© Fricke

GREEN ROOF

Water areas

- Temporary or permanent water areas
 - min. 1m², min. depth of 5 - 20 cm
- Suitable design (e.g. foils, tubs, etc.), lined with clay and gravel



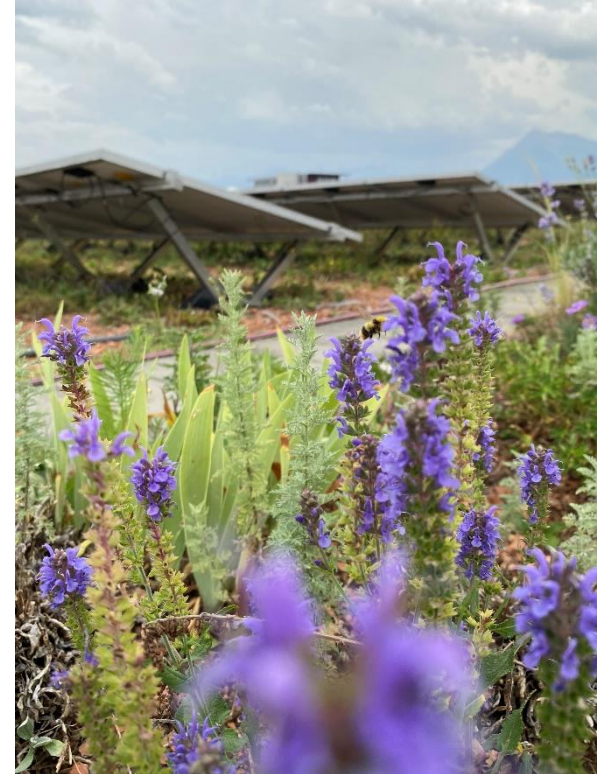
© GSG/Gruchmann

© Steinbauer

SOLAR GREEN ROOFS

Switzerland

© GSG/Haymerle



SOLAR GREEN ROOFS

with elements for Biodiversity



© GSG/Gruchmann



© GSG/Haymerle



Let's make the world greener better!